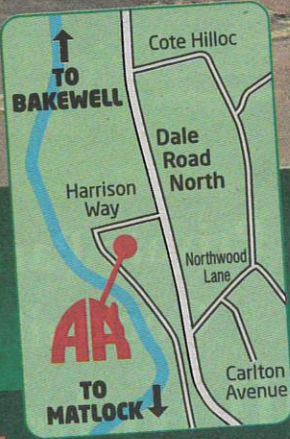


# Summer Savings on INDIAN PAVING



NOW AVAILABLE - DECORATIVE AGGREGATES!

from **£15m<sup>2</sup>** + VAT



Ashbrook Roofing & Supplies Ltd  
Tel: 01629 732988  
Email: info@ashbrookroofing.co.uk  
Web: www.ashbrookroofing.co.uk

Harrison Way,  
Darley Dale,  
Derbyshire  
DE4 2LF

More than Roofing...

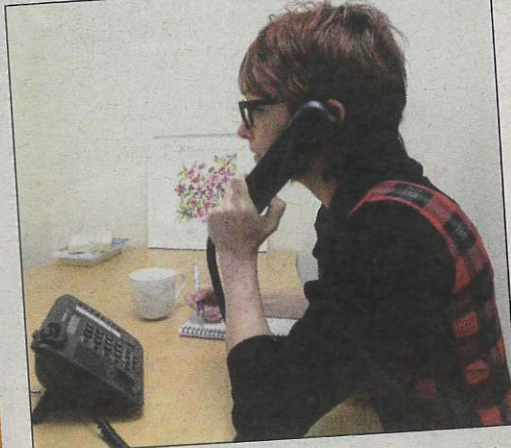
Here to help...

Part Exchange Your Old Suite Now  
It Could be Worth Up To  
With Our Trade In Discount

# £600

Peak Advertiser Office: (01629) 812159

## COULD YOU BE A TELEPHONE BEFRIENDER? A Call Out For Volunteers



Derbyshire Carers Association are seeking volunteers to make friendly phone calls to isolated carers. This new charity project supports carers who feel vulnerable and lonely, particularly those without a network of family and friends to share the responsibility.

Some caring roles are especially demanding and carers remain tied to the home tending to the needs of their loved one. It may be that they are looking after a spouse who is suffering from dementia or caring for a parent who has a

physical disability. Having someone to talk to, a friendly voice, can be a lifeline.

A telephone befriender just needs to be a good listener, with patience and compassion. By calling a carer once a week a befriender offers companionship, alleviating some of the loneliness that the caring role can bring.

If you'd like to learn more about this service, please call: 01773 833833 and have a chat to Befriending Coordinator Diane Naylor at Derbyshire Carers Association.

## MATLOCK PROBUS

Members of Matlock Probus travelled to Sheffield on Thursday 11th July to visit the Kingfield Hall Synagogue, Psalter Lane. We were made to feel very welcome by Kath Lawrence who, whilst we enjoyed a plentiful supply of tea, coffee and home-made biscuits, gave us some background information on Judaism

and small shop keepers. Sir Marcus Samuel, an eminent Jew and Lord Mayor of London, was chosen to lay the foundation stone for the newly created Sheffield University in 1903.

The post war years were a period of mixed fortunes for Sheffield Jewry. The Jewish community was, in the 1950s, at its zenith with